



FEATURES

- Single-jet meter
- Compact brass body
- Union couplings
- Easy installation and maintenance
- Interfaces with many controls and displays

APPLICATIONS

- Industrial control operations
- Low flow situations
- Clean water



GENERAL INFORMATION

The SEB is a plated brass low flow meter suited for clean water. It is available in 1/2" and 3/4" thread, with union-type meter couplings for easy installation and service. This meter is ideal for flow rates between 0.2 GPM (0.76 LPM) and 18 GPM (68.14 LPM). The SEB has only one moving part, the propeller.

A 5-30 Vdc square wave output makes the SEB ideal for many industrial control applications. This signal interfaces easily with programmable logic controllers and computer input boards. SEB meters can also be used in conjunction with the Seametrics FT420 flow computer for reading flow rate and total flow, or AO55 for 4-20 mA output. For metering pump pacing applications, a standard PD10 pulse divider is recommended.

SPECIFICATIONS*

Sensor	GMR 5-30 Vdc current sinking pulse										
Fittings	1/2", 3/4" male NPT union couplings										
Materials	<table border="1"> <tbody> <tr> <td>Body</td> <td>Nickel-plated brass</td> </tr> <tr> <td>Rotor Chamber</td> <td>Brass</td> </tr> <tr> <td>Rotor</td> <td>Thermoplastic</td> </tr> <tr> <td>Shaft</td> <td>Tungsten carbide</td> </tr> <tr> <td>Bearings</td> <td>Water-cooled thermoplastic</td> </tr> </tbody> </table>	Body	Nickel-plated brass	Rotor Chamber	Brass	Rotor	Thermoplastic	Shaft	Tungsten carbide	Bearings	Water-cooled thermoplastic
Body	Nickel-plated brass										
Rotor Chamber	Brass										
Rotor	Thermoplastic										
Shaft	Tungsten carbide										
Bearings	Water-cooled thermoplastic										
Maximum Temperature	185° F (85° C)										
Maximum Pressure	175 psi (12 bar)										
Cable	#22 AWG 3-cond, 12' Maximum run 2,000' (610 m)										
Flow Range	1/2": 0.2 - 10 GPM (0.76 - 37.85 LPM) 3/4": 0.2 - 18 GPM (0.76 - 68.14 LPM)										
Standard K-Factor	1/2": 550 pulses per gallon 3/4": 330 pulses per gallon										
Accuracy	+/- 1% of full scale										
Regulatory	CE Mark										

*Specifications subject to change. Please consult our website for the most current data (www.seametrics.com).

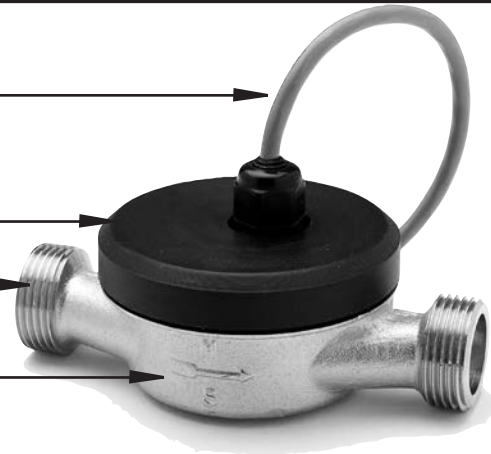
FEATURES

Hall-effect 12 Vdc signal interfaces with a variety of electronics

Removeable top contains electronics, isolated from fluid

Union ends with couplings
Easy installation and service

Compact nickel-plated body

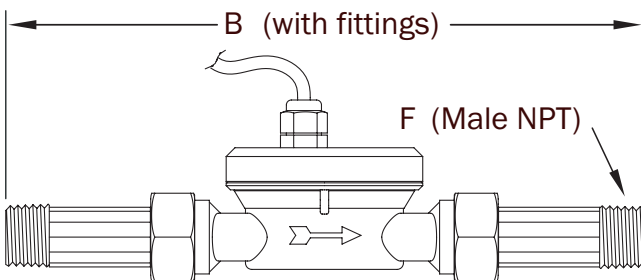
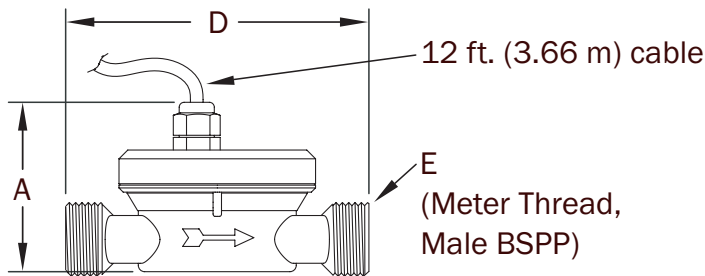


INSTALLATION and MAINTENANCE

Installation. Single-jet meters like the SEB are somewhat insensitive to upstream and downstream flow conditions. For best results, however, upstream and downstream straight pipe of five pipe diameters is recommended.

Maintenance. The SEB's Hall-effect sensor and cap are field-replaceable.

DIMENSIONS



SENSOR CONNECTION



Dim.	1/2 Inch	3/4 Inch
A	2.5	2.5
B	9.2	10.4
C	2.8	2.8
D	4.35	5.1
E	3/4 in. BSPP	1 in. BSPP
F	1/2 NPT	3/4 NPT

HOW TO ORDER

MODEL

SEB

SEB

SIZE

1/2" = -050

3/4" = -075

ACCESSORIES

Remote rate and total display = FT420W

Pulse divider = PD10

4-20 mA output = AO55W

CONTACT YOUR SUPPLIER



Procon Instrument Technology
1/119 Delta Street Geebung QLD 4034
PO Box 663 Virginia BC QLD 4014
07 3823 1922
sales@proconit.com.au
www.proconit.com.au